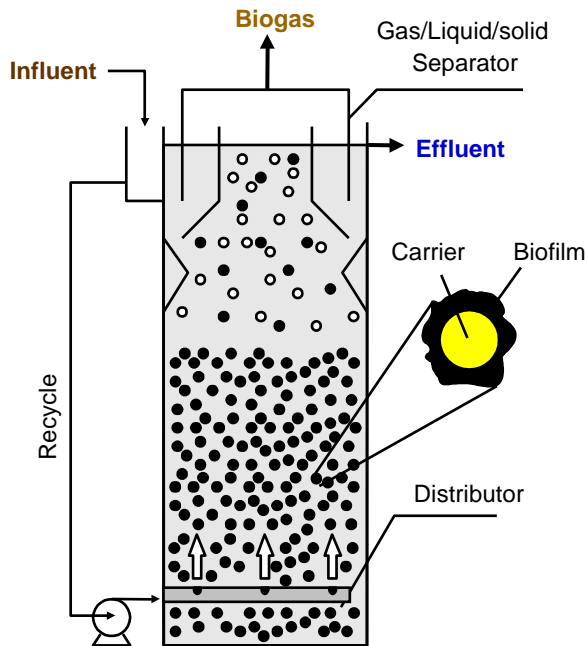


ANAEROBIC BIO-REACTOR

ANAEROBIC FLUIDIZED BED (AFB)



Introduction

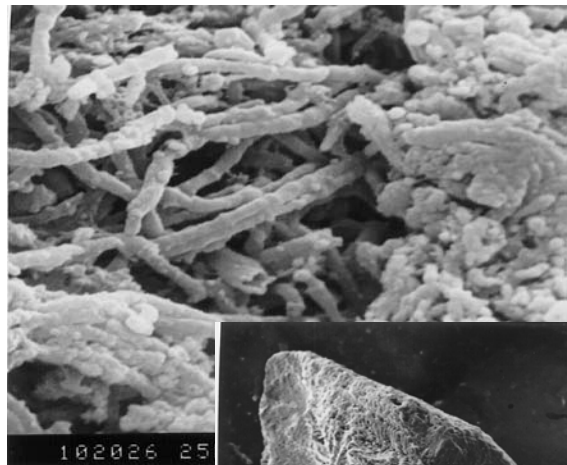
AFB fine inert carriers which provide large surface area for adherence and growth of anaerobic microorganism are added in the bioreactor. The carriers are fluidized to enhance mass transfer and degradation rate of organic pollutants.

Features

- Media selection
- Easy Operation and control
- Potential energy recovery (methane is usable)
- High Loading Treatment Efficiency
- Self dilution for bio-inhibitors
- Very small Foot Print Requirement

Special Applications

- Wastewater with **bio-inhibitors/toxic** compounds (eg. phenol, formaldehyde, formalin, acetate)
- Land space limitation
- Petro-Chemical/food,
- Chemical manufacturing/Resin industries
- Oil and gas industry



▲ AFB reactor in rubber & plastic manufacturing plant

▲ Anaerobic bacteria adhered on the surface of granular charcoal